

A-Level Biology A
H420/01 Biological Processes

Question Set 21

21 (a) (i) Fig. 21.1 shows a transverse section of a human adrenal gland.

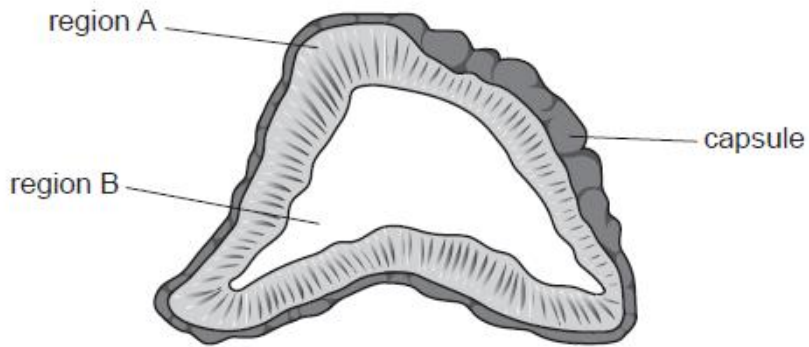


Fig. 21.1

The table below describes the functions of some hormones produced by different regions of the adrenal gland.

Complete the table using Fig. 21.1 and your own knowledge.

Hormone produced	Functions of hormone
adrenaline
.....	increases heart rate increases blood pressure widens pupils
androgens	regulation of sexual characteristics and cell growth
.....	regulation of metabolism

[2]

21 (a) (ii) Using Fig. 21.1, identify the letter and name of the region of the adrenal gland that secretes adrenaline.

[1]

- 20 (b) (i) Phaeochromocytoma is a rare tumour of adrenal gland tissue. It causes increased hormone release from the adrenal glands.

Fig 21.2 shows three ECG traces showing the heart rhythms of three different patients.

- Patient X has a normal heart rhythm.
- Patient Y has phaeochromocytoma.
- Patient Z has bradycardia.

Identify patients X, Y and Z by labelling the traces in Fig. 21.2.

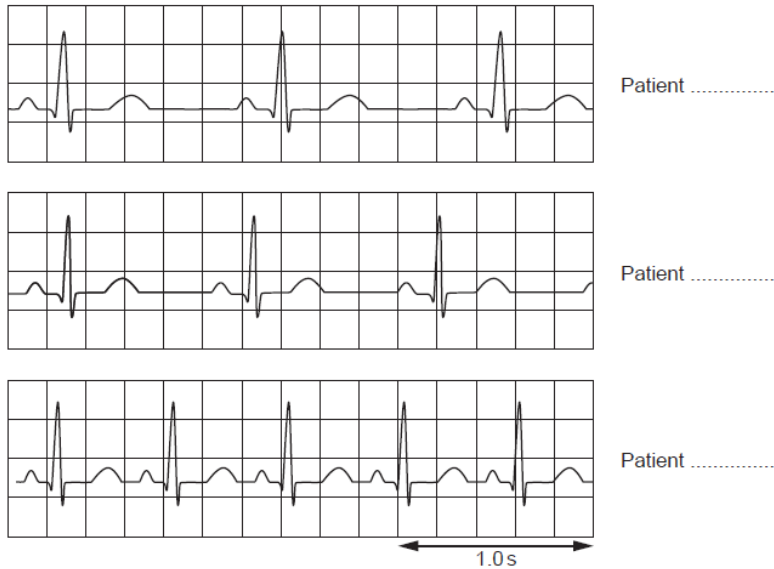
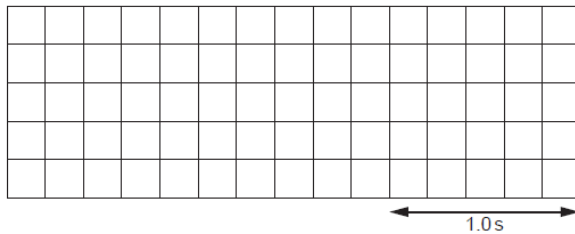


Fig. 21.2

- 21 (b) (ii) Sketch an ECG trace for a patient who has entered atrial fibrillation



- 20 (b) (iii) Suggest why reduced heart rate is sometimes seen in people who are very aerobically fit.

Total Marks for Question Set 21: 9

OCR

Oxford Cambridge and RSA

Copyright Information

OCR is committed to seeking permission to reproduce all third-party content that it uses in its assessment materials. OCR has attempted to identify and contact all copyright holders whose work is used in this paper. To avoid the issue of disclosure of answer-related information to candidates, all copyright acknowledgements are reproduced in the OCR Copyright Acknowledgements Booklet. This is produced for each series of examinations and is freely available to download from our public website (www.ocr.org.uk) after the live examination series.

If OCR has unwittingly failed to correctly acknowledge or clear any third-party content in this assessment material, OCR will be happy to correct its mistake at the earliest possible opportunity.

For queries or further information please contact The OCR Copyright Team, The Triangle Building, Shaftesbury Road, Cambridge CB2 8EA.

OCR is part of the Cambridge Assessment Group; Cambridge Assessment is the brand name of University of Cambridge Local Examinations Syndicate (UCLES), which is itself a department of the University of Cambridge